



# *Society of Women Engineers*

Spring 2020

Monday, February 3, 2020

Welcome to SWE

# Agenda

Time	Topics
6:30P - 6:45P	Sign In & Pizza
6:45P - 6:55P	Introduction & Meet the Board
6:55P - 7:15P	Semester Breakdown & Events
7:15P - 7:45P	SWE-LA Presentation
~7:45P	Thank You For Coming...Questions?



# What is SWE?

# About The Society of Women Engineers

Founded in 1950 to be...

*“ The driving force that establishes engineering as a highly desirable career aspiration for women ”*

In 2019, the organization celebrates...

**40k** **SWE members**  
**around the globe**



## Membership Benefits

Professional development & career services

Networking opportunities

Discounted registration for SWE conferences

Advocacy & Congressional Outreach work



# CSUN SWE's Mission

*To help those with marginalized identities to succeed in their respective engineering and computer science studies*



***How do we do this?***

# HOW CAN WE HELP YOU?



# Meet the Board!

# Meet the Board



**Tina, President**  
**Mechanical Engineering &  
Physics**

*Goals:* Expose more SWE members to scientific research!



**Jazmin, Vice President**  
**Computer Science**  
**Minoring in Chicanx Studies**

*Goals:* Make SWE more sustainable on campus and increase the number of members attending conferences.

# Meet the Board



**Thea, Secretary**  
**Mechanical Engineering**

*Goals:* Provide more opportunities for members



**Sorour, Treasurer**  
**Electrical Engineering**

*Goals:* Become an expert in RFIC design one day!

# Meet the Board



**Alexis, Outreach  
Computer Science**



*Goals:* Enter the EdTech industry  
and build kids a future from  
K to PHD.



**Cynthia, Fundraising  
Computer Engineering**

*Goals:* Fundraise for future  
events

# Meet the Board



**Jenny, Events Chair**  
**Mechanical Engineering**

*Goals:* I look forward to getting a masters in thermofluids and following in the footsteps of my mentor Dr. Amar



**Gisela, Public Relations**  
**Computer Science**

*Goals:* Bring more of a social presence to CSUN through all our social medias. Also display what a Board Member does here at SWE.

***Interested in running for the  
board next year?***

***Talk to any board member  
today!***

# Announcements

# Semester Meetings: Mondays @ 6:30P

**Welcome Back  
&  
SWE-LA  
@ CSUN**

## FEBRUARY

02.03.2020

6:30pm

02.17.2020

6:30pm

**E-Week:  
CSUN Women  
in Engineering  
Take Action**

**#SWETalks  
Research  
Opportunities  
at CSUN**

## MARCH

03.02.2020

6:30pm

03.30.2020

6:30pm

**Trash Talkers  
with  
The CSUN  
Institute for  
Sustainability**

**Special  
Guest  
Speaker**

## APRIL

04.13.2020

6:30pm

04.27.2020

6:30pm

**Special  
Guest  
Speaker**



# Call for VOLUNTEERS

Nurture the next generation of scientists and engineers and join CSUN SWE in our newest outreach efforts with the Girl Scouts!

- ★ **Plan** and organize events
- ★ **Connect** to local troops
- ★ **Hands-on** badge workshops

*For more info, sign up here:*



[bit.ly/swe-girl-scouts](https://bit.ly/swe-girl-scouts)



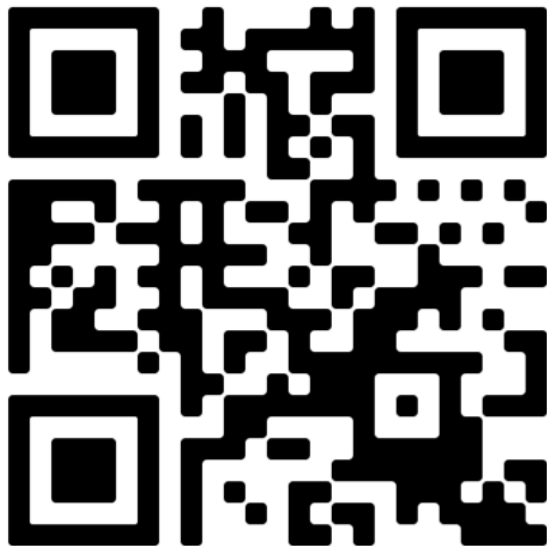
# WRANGLING WITH ROBOTICS Workshop

Teach kids the fundamentals of **robotics** and electronics by helping them **build** and test their own.

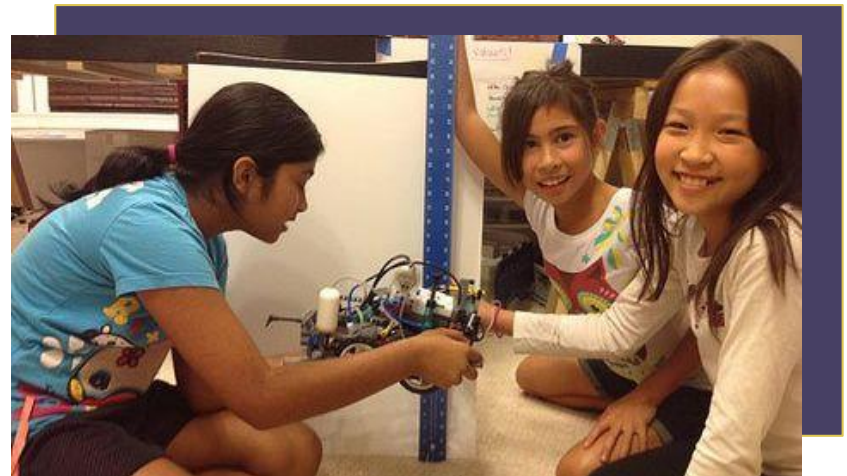
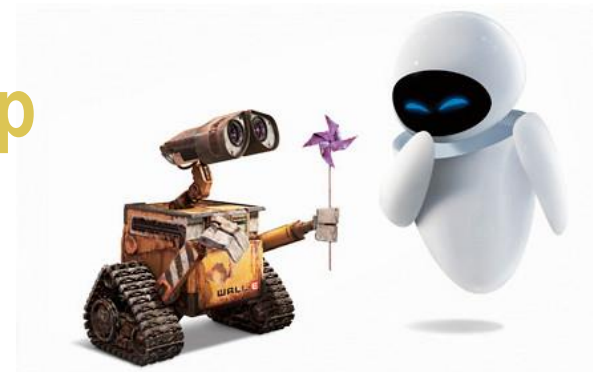
Where: Northridge Middle School

When: TBD

*Sign up here:*



[bit.ly/swe-robotics](https://bit.ly/swe-robotics)



# *SWE*et Speaker Series

Share your engineering experiences/skills with kids & teens!  
Help create the next generation of scientists and engineers.

## *Talk about:*



What inspired you  
to pursue STEM



What you've  
learned at school



Cool projects  
you've worked on



Your transition to  
college or industry



What you do in  
the STEM field

*Interested? Go here:*

[bit.ly/  
swe-speaker-series](https://bit.ly/swe-speaker-series)



*And anything else!*

# BUILT BY GIRLS

## WAVE

This is not your typical mentorship program.

WAVE is a **one-of-a-kind mentorship** program that is designed to support female and non-binary students as they take the first step into **their careers**.



**1:1 Sessions** with Advisor to get personal guidance. **Session Guides** provided so no awkward silence.



Commit **1 hour a month**, for 3 months per Advisor.



**Build your network** of peers and professionals.

**Get Matched With Advisors from...**



BuzzFeed

The New York Times



verizon✓

amazon.com

yext

Spotify

REFINERY29

Uber

tumblr.

SQUARESPACE

airbnb

verizon✓  
media

**Go here:**



**Sign Up By:**

**March 1<sup>st</sup>, 2020**



# SWE Shirts



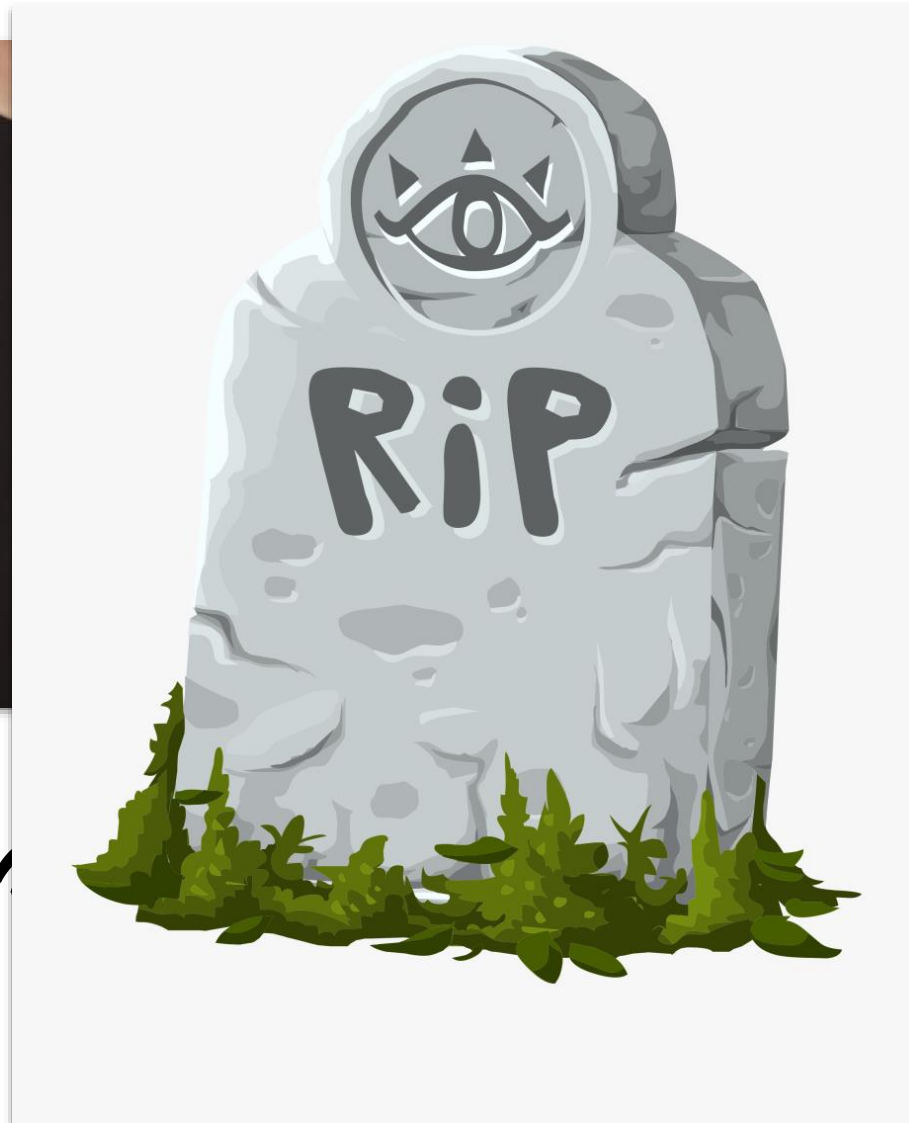
**\$15 EACH**

**AVAILABLE IN RED AND BLACK  
SIZES S-XL**

# SWE Shirts



AV



K

# !!! DESIGN CONTEST !!!

**Have a SWE-et idea for a t-shirt design?  
Submit your ideas or designs for the new SWE t-shirt!**



*Scan me!*



*May the odds be ever  
in your favor....*



[bit.ly/swe-tshirt](https://bit.ly/swe-tshirt)

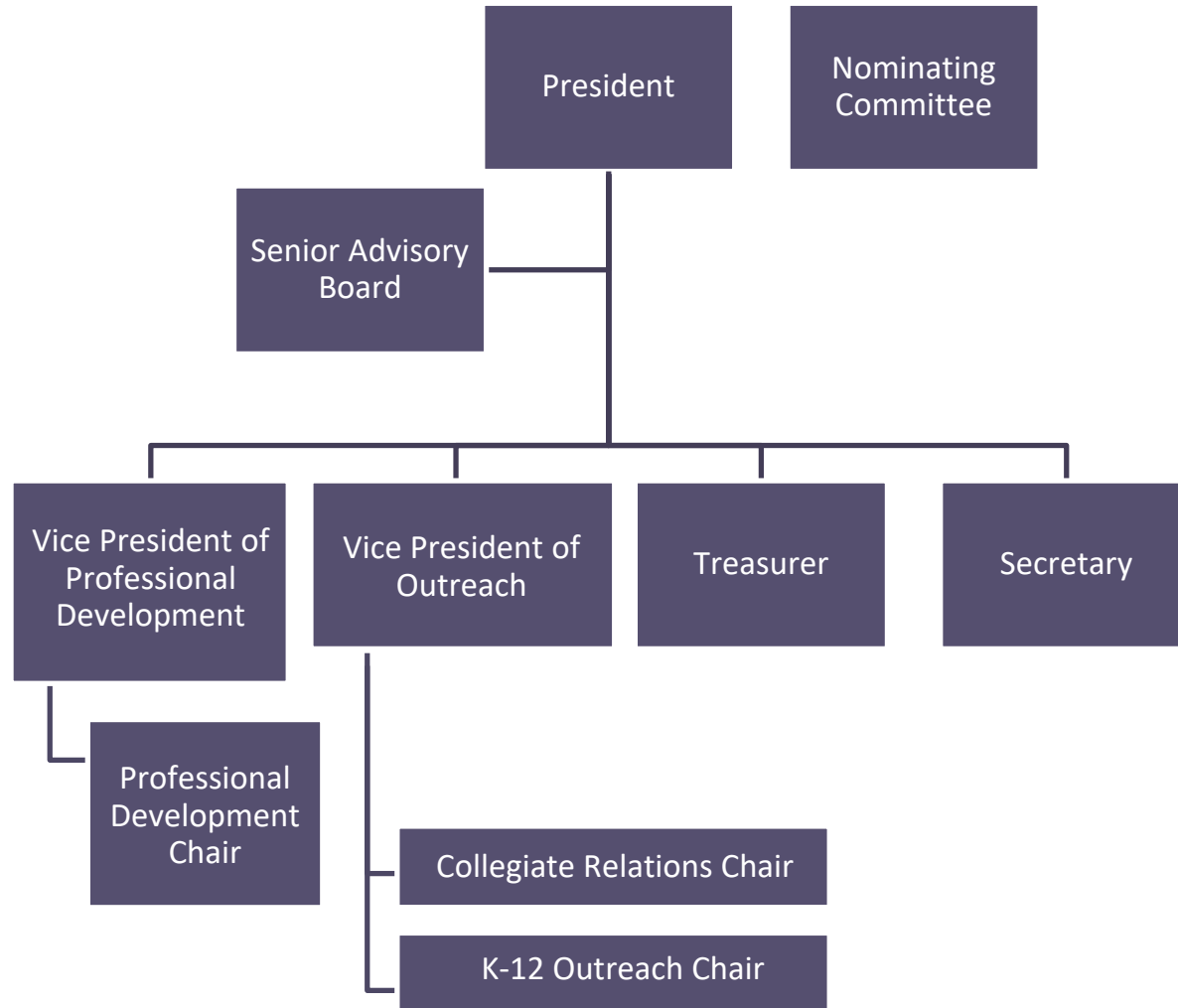
# *A Special Presentation* *with* SWE-LA

## Our Mission

Stimulate women to achieve full potential in careers as engineers and leaders, expand the image of the engineering profession as a positive force in improving the quality of life, and demonstrate the value of diversity.



# Los Angeles Section Executive Council

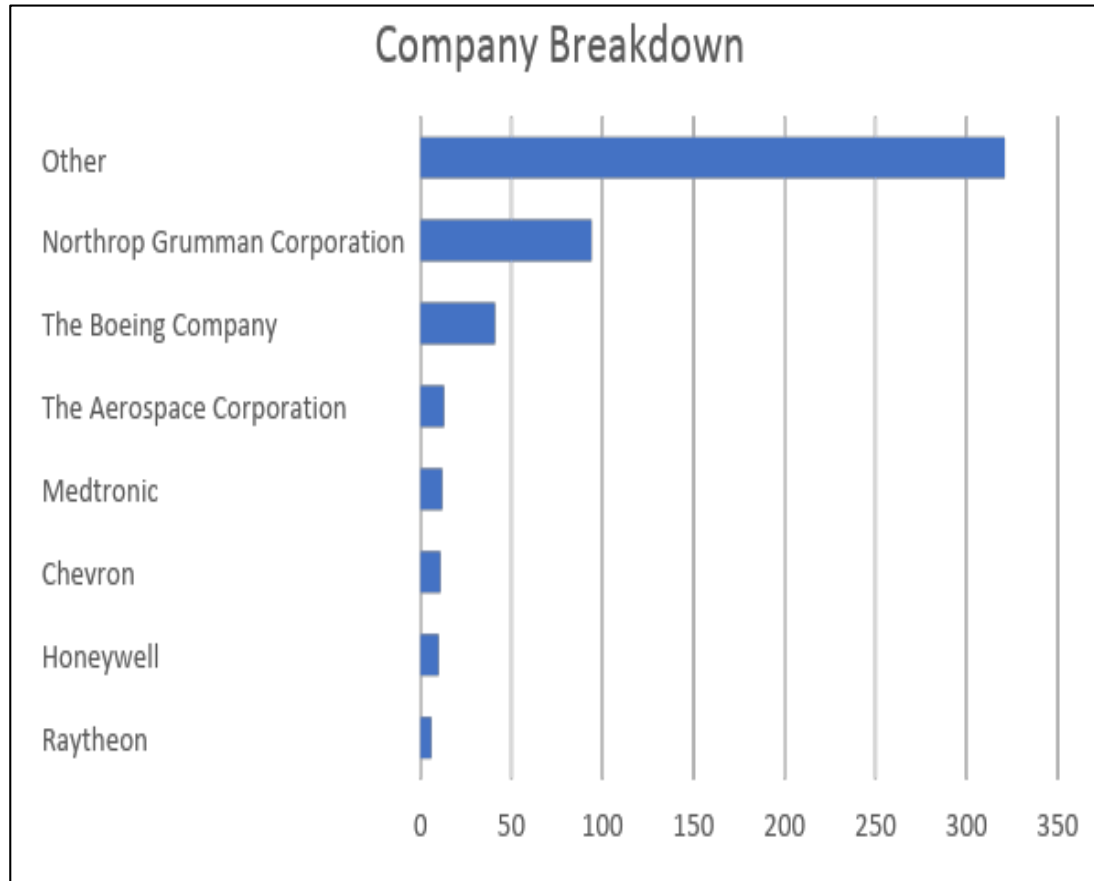


# Current Membership

- Over 800 Members
  - SWE HQ award for most members in FY20
- One of the largest of the Society's 400+ professional and collegiate sections
- Geographically spread from Calabasas to Long Beach; Pomona and La Cañada to the Pacific Ocean
- Most densely located in the South Bay, the Verdugos, San Gabriel Valley, and San Fernando Valley



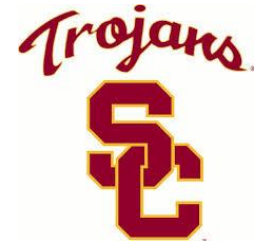
# Company Distribution



Raytheon	6
Honeywell	10
Chevron	11
Medtronic	12
The Aerospace Corporation	13
The Boeing Company	41
Northrop Grumman Corporation	94
Other	321

# Los Angeles Collegiate Sections

Collegiate Section Supported by SWE-LA



Note: CSU Long Beach is in Los Angeles, but under the SWE-OC umbrella

# Open Positions

## **Collegiate Outreach:**

- Assist chair with planning events, gathering volunteers, etc.
- Assist with scholarship applicant review process (conduct in-person interviews, select final recipients, etc.)

## **K-12 Outreach:**

- Assist chair with planning events, gathering volunteers, etc.

## **Professional Development Conference (PDC):**

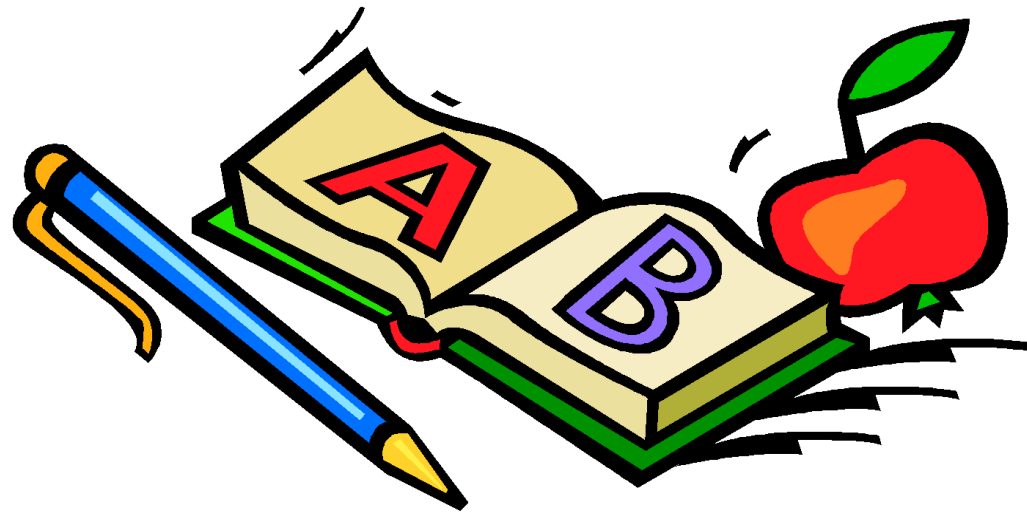
- Annual conference held in April in Torrance
- ~150-200 attendees, mostly aerospace, oil, energy because of South Bay location, but we are trying to expand
- VP assists PDC co-chairs as needed (may include attending PDC meetings, contacting sponsors, finding speakers, coordinating volunteers, volunteering on day of, etc.)



# SWE-LA Scholarships

# SWE-LA Scholarship Program

- Multiple award recipients
- Made possible via corporate donations and a SWE-LA endowment
- Awards are typically \$500 to \$1500



# Available Scholarships

- SWE CSUN Endowed Scholarship
  - Must be a CSUN student
  - Minimum of 3.0 GPA to be considered
- SWE Endowment Scholarship
  - Minimum of 3.0 GPA to be considered
- SWE-LA Scholarship
  - Open to female students only, minimum 3.2 GPA
- SWE-LA Volunteer Scholarship
  - Open to everyone, minimum 2.5 GPA



# Who is Eligible?

- Women and Men enrolled in undergraduate engineering programs through Dec 2020 at:
  - Cal Poly Pomona, Caltech, Cal State LA, Cal State Northridge, Harvey Mudd, Loyola Marymount, UCLA, or USC.
- Applicant must be a SWE student member
- Applicant must be a Sophomore, Junior, or Senior\*
  - \* Seniors must verify application/enrollment in graduate school



# Typical Qualifications

- Demonstrate high academic and problem solving abilities
- Show interest in professional development by:
  - Participating in technical organizations
  - Holding leadership positions
  - Conducting research projects, or
  - Pursuing STEM-related\* work opportunities.
- Tenacious
- Effective communicator
- Example to other students both technically and socially
- Special consideration will be given to those with unique circumstances and financial need



*\*Science, Technology, Engineering, and Mathematics (STEM)*

# How to Apply

- Download application from:  
<http://losangeles.swe.org/collegiate-scholarships.html>
- Submit application package electronically to  
[scholarships.swela@gmail.com](mailto:scholarships.swela@gmail.com):
  - Google Form Application
  - Resume
  - Letter(s) of recommendation
  - Transcript
- Complete in-person interview

# Key Dates

- Application due: **February 28, 2020**
- In-person interviews conducted in early/mid March
- Notification of Award: **March 13, 2020**
- Scholarship Awarded: **April 3, 2020**
  - At the SWE-LA Professional Development Conference/Scholarship Recognition Luncheon

**Questions?** Contact SWE LA at [\*\*\[scholarships.swela@gmail.com\]\(mailto:scholarships.swela@gmail.com\)\*\*](mailto:scholarships.swela@gmail.com)

# Follow SWE on Social Media



@csun\_swe



csunswe.slack.com



[www.facebook.com/swe.csun](http://www.facebook.com/swe.csun)



[www.csunswe.org](http://www.csunswe.org)

*Thank you for coming!*



**SCIENCE**



**ENGINEERING**